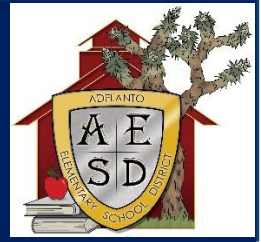




GEORGE VISUAL AND PERFORMING ARTS K-8 MAGNET AND MIDDLE SCHOOL 2020-2021 SPSA Overview



710

**K-8th Grade
Students**



George Pyramid of Success

- ★ Competence
- ★ Connectiveness
- ★ Compassion

School Vision and Mission

Our Vision: George Magnet School provides a rich and varied academic education centered around visual and performing arts to empower our scholars to be well-rounded, successful, productive and creative members of society.

Our Mission: George Magnet School is committed to providing its young scholars with a safe, respectful, and responsible environment for their academic, artistic, and social success.

Stakeholder Involvement

Student Demographics

| | | |
|----------------------------------|----------------------------------|-------------------------|
| 8.8% African American | 79.3% Hispanic/Latino | 5.0% White |
| 1.9% Two or More Races | 18.7% English Learners | 74.2% SED |
| 6.3% SWD | 1.6% Foster Youth | .43% Homeless |

The School Site Council (SSC) consists of the following stakeholders: parents, the principal, certificated teachers, and a classified employee. SSC meets regularly to review, discuss, and give input on the creation of the school's areas of need, goals, and action plans. The SSC approves budget allocations and all changes to the SPSA. In addition, the SSC reviews action items for effectiveness and makes recommendation based on the data provided during the reviews. Additionally, our ELAC advises the principal and staff on programs and services for English learners and the SSC on the development of the Single Plan for Student Achievement (SPSA).

SPSA Highlights

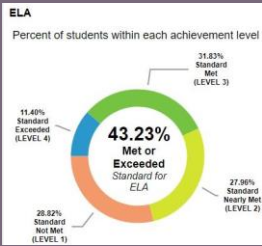
- Increase access to technology for students and teachers
- Good First Instruction in content areas
- Intervention/Enrichment Supports for Students (RTI, Before/After school Tutoring and Enrichment)
- Progress monitoring using multiple assessments and data analysis with teachers to inform instruction
- Visual and Performing Arts program for all students
- Professional Development for teachers
- Parent Engagement: Parent trainings and supports
- Student Engagement: Instructional design and delivery; student self-management and self-awareness

Comprehensive Needs

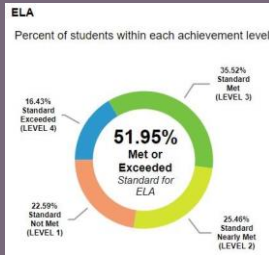
The following committees are included in the development and review of the SPSA, data analysis, and budget recommendations: School Site Council, English Language Advisory Council (ELAC), Teachers, Leadership Team. The committees reviewed the school CAASPP data for three years (2017, 2018, 2019), student demographic data, ELPAC data, suspension data, and chronic absenteeism data. The members looked for growth and needs in each area. Based upon the identified areas of need, goals and resources were written into the SPSA. The needs identified are English Learner growth at levels 1 and 2, parent Engagement, and students engagement leading towards academic achievement in ELA and Math.

School and Student Performance Data

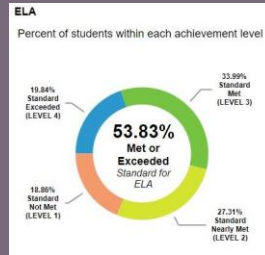
2016-2017



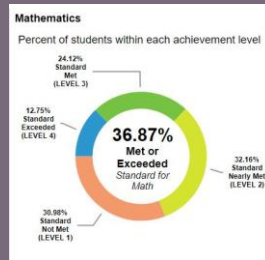
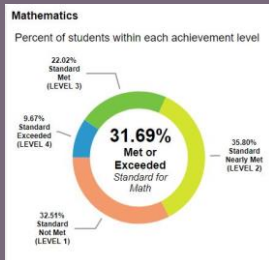
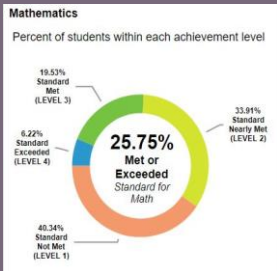
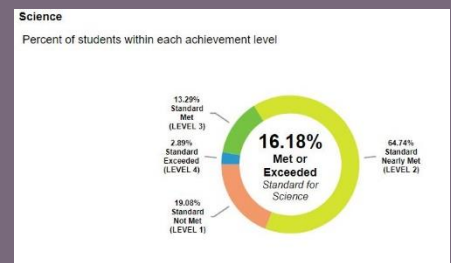
2017-2018



2018-2019



2018-2019



Two Year Growth

ELA 10.6%

Math 11.12%

2020-2021 SPSA Goals

LCAP GOAL 1: Conditional for learning
School Goal 1: Conditions for Learning

| Budget | Strategy/Activity | Student Group Served |
|-------------------------------------|--|----------------------|
| N/A | 100% Fully credentialed teachers | All Students |
| Discretionary- Custodial | 100% Safe and clean environment | All Students |
| \$11,364 LCFF-Supp/Concentration | School safety | All Students |
| N/A | 100% Standards-aligned ELA and Math materials | All Students |
| \$15,363.32 LCFF-Supp/Concentration | Increase technology and supplies for students and staff | All Students |
| \$22,668.29 Site Discretionary | | |
| \$1500.00 LCFF-Supp/Concentration | | |

LCAP Goal 1: Pupil Outcomes
School Goal 2: Pupil Outcomes

| Budget | Strategy/Activity | Student Group Served |
|--|---|----------------------|
| \$4,320 LCFF- Supp/Concentration | Data chat meetings with teachers/teams (Activity 1c) | All Students |
| \$3,000 LCFF- Supp/Concentration | Good first instruction in reading/language arts <ul style="list-style-type: none"> Purchase instructional materials and supplies for students (Activity 3 part 1e) Reading instructional software grades K-2 (Activity 3 part 2c) Reading intervention instructional program/materials (Activity 3 part 2h) Library books (Activity 3 part 2i) | All Students |
| \$1,889.55 Title I Part A: Basic Grants Low-income and Neglected | | |
| \$4,000 LCFF- Supp/Concentration | | |
| \$13,941 Lottery: Instructional Materials | | |
| \$5,243 LCFF-Supp/Concentration | Student growth in Math Renew/Purchase math instructional software/materials K-8 (Activity 4d) | All Students |
| \$3,000 Title I Part A: Basic Grants Low-Income and Neglected | | |



| | | |
|--|---|---|
| | Teacher professional development and compensation for teachers to attend professional development (Activity 4f) | |
| \$13,000 Title I Part A: Basic Grants Low-Income and Neglected | Tutoring for students (Activity 5 a) | Students with Disabilities, English Learners, Students Performing Below Grade Level |
| \$4,480 Title I Part A: Basic Grants Low-Income and Neglected | Student Success Team (SST) meetings for students (Activity 7 d) | Student performing significantly below grade level |
| \$1,000 Title I Part A: Basic Grants Low-Income and Neglected | Implement Next Generation Science Standards (NGSS) and Social Science Framework | All Students |
| \$1,000 Site Discretionary | Purchase supplemental instructional materials and supplies | |

School Goal 3: Engagement

| Budget | Strategy/Activity | Student Group Served |
|---|---|--|
| \$4,500 Title I Part A: Basic Grants Low-Income and Neglected & | Interventions to Support Positive Behavior on Campus Anti-bullying assemblies for students (Activity 1B part c) | All Students |
| \$2,000 LCFF- Supp/Concentration | Social Emotional Learning (SEL) to support materials and resources (Activity 2a) | All Students |
| \$5,000 LCFF- Supp/Concentration | Increase attendance- student certificates and incentives (Activity 3 c) | Students with disabilities, At-risk students, Socioeconomically Disadvantaged Students |
| \$3,500 Title I Part A: Basic Grants Low-Income and Neglected \$1,500 Title I Part A: Basic Grants Low-Income and Neglected \$550 Title I Part A: Basic Grants Low-Income and Neglected | Career and College Ready Digital Photography CTE course instructional software licenses, supplies and materials (Activity 4 a) Substitutes for honors math teachers to attend professional development Purchase instructional materials for math classes (Activity 4 e) | Middle School Students and GATE/High achieving students |
| \$86,847.60 LCFF- Supp/Concentration \$5,000 LCFF- Supp/Concentration \$4,995 LCFF-Supp/Concentration \$5,000 LCFF-Supp/Concentration | Visual and Performing Arts Program Drama teacher (Activity 5 a) Drama class resources, materials, and supplies (Activity 5 a) Music class repairs, resources, materials, and supplies (Activity 5 b) Arts class resources, materials, and supplies (Activity 5 d) | All Students |
| \$2,200 LCFF-Supp/Concentration | Coding Class for students offered after school (Activity 6 a) | All Students |
| \$2,500 LCFF- Supp/Concentration \$3,000 Title I Part A: Basic Grants Low-Income and Neglected \$10,000 Title I Part A: Basic Grants Low-Income and Neglected | Student engagement After school MEEC club materials and supplies (Activity 7 a) Before/After school enrichment classes for GATE/high achieving students (Activity 7 b) Teacher professional development and instructional materials and resources (Activity 7 d) | All Students/ GATE/High Achieving Students |
| \$3,000 Title I Part A: Basic Grants and Low-Income and Neglected \$6,000 Title I Part A: Basic Grants Low-Income and Neglected \$500 Site Discretionary | Parent engagement and supports Professional development for teachers (Activity 8 g) Parent education trainings/classes (Activity 8 h) Provide snacks for onsite parent meetings (Activity 8 j) | All Students |

School Goal 4: English Learner Progress

| Budget | Strategy/Activity | Student Group Served |
|---|--|----------------------|
| \$7,500 Title I Part A: Basic Grants and Low-Income and Neglected | Purchase a supplemental English Learner instructional software to assist in practicing English Language Development. Provide EL students at level 1 and 2 with additional before/after school tutoring. | English Learners |



Total SPSA Budget is \$259,361.76



- Student engagement up to 90%
- Parent engagement and supports to 98%
- Student growth in ELA and Math by 5%+
- Growth for English Learners at levels 1 and 2 up one level



We want to increase:



We want to decrease:

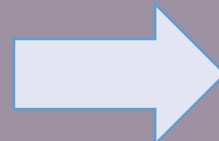


- Chronic absenteeism by 5%
- Suspension rate by 5%

- English learner reclassifications
- Safe and clean environment 100%
- Technology devices for staff and students
- Visual and Performing Arts Classes



We want to maintain:



**George Visual and Performing Arts K-8
Magnet and Middle School**
 Principal: Mrs. Carol Coburn
 10650 Bartlett Ave., Adelanto, CA 92301
 Phone (760) 246-8231 | Fax (760) 246-7227